

Shock Mounting

Type XM – Mount



Type XM shock mountings are highly effective in reducing the transmission of vibration, structure-borne noise and shock from a wide range of rotating and reciprocating machinery. Also in protecting sensitive apparatus from external disturbances. They are specifically designed to replace the X mounting in higher ambient temperature environments.

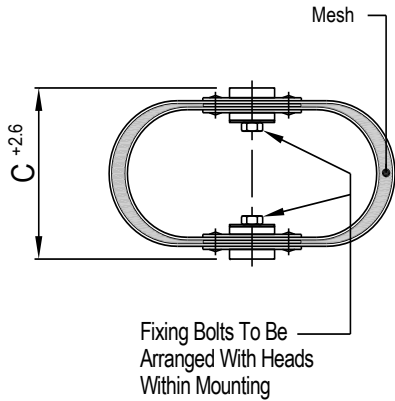
Design Features

- Manufactured in stainless steel with high impact nylon washers for fixing bolts.
- Two different horizontal stiffness axes enable optimum system characteristics and vibration isolation to be achieved using careful orientation of the mountings.
- Each isolator is individually stencilled with nominal load on outer casing for easy identification.
- Static deflections of up to 8 mm with loads from 6kg to 450 kg.
- High Temperature Shock Mounting.

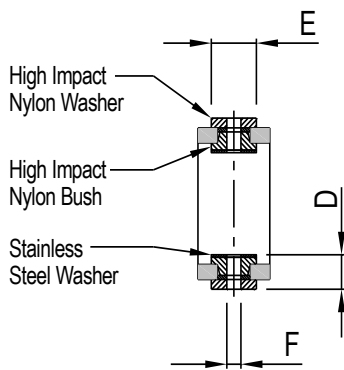
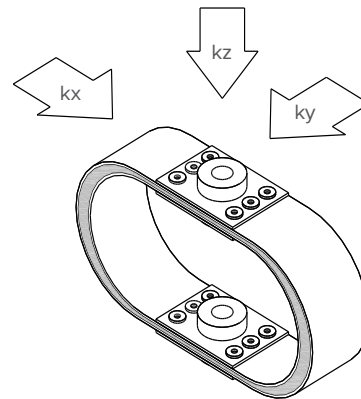
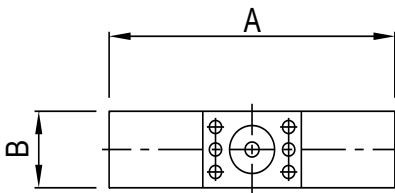
Typical Applications

- Pumps and Compressors.
- Isolation of sensitive equipment.
- Electrical Cabinets/Panels.
- Transformers.

TYPE XM-MOUNT SHOCK ISOLATORS



PART No.	NOM. LOAD (kg)	LOAD RANGE (kg)	DIMENSIONS (mm)						BOLT SIZE F	STIFFNESS (N/mm)		
			A	B	C		D	E		VERT kz	LATERAL	
					LOADED	FREE					kx	ky
XM.010	10	9 – 18	203	51	106	114	23	32	M8	20	11	26
XM.020	20	18 – 35								29	16	38
XM.045	45	35 – 55	216	51	124	133	26	32	M12	54	30	70
XM.070	70	55 – 90								83	46	108
XM.110	110	90 – 135								104	57	135
XM.180	180	135 – 250	297	102	185	190	43	64	M20	346	190	450
XM.320	320	250 – 380								541	298	704
XM.450	450	380 – 550								690	379	897



Application Notes

- +2.6 mm allowable tolerance on dimension 'C' free height.
- Optimum system stiffness characteristics can be achieved by careful orientation of individual isolators.
- Optional soleplate is available to facilitate installation on resin chocks.
- We recommend that all fixings used are high tensile Grade 8.8 or higher.
- All connections to and from isolated machine must include flexible lengths, not only to prevent transmission of vibration through the connections and allow the system freedom of movement, but also to avoid possible failure of the connections.
- Important! When directly bulkhead mounted, the load range is to be reduced by 0.5

For full instructions please refer to our data sheet DS038.

For more detailed information and technical assistance please contact our Technical Department.

In the interests of continual development, the Company reserves the right to make modifications to these details without notice.



Christie & Grey Ltd
 Morley Road,
 Tonbridge, Kent
 TN9 1RA, England

T: +44 (0)1732 371100
 E: sales@christiegrey.com
 W: www.christiegrey.com



Christie & Grey
 SINCE 1914