

TECHNICAL DATA SHEET

DS 033

NON CONTROLLED UNLESS STATED OTHERWISE

PAGE	1 of 3
ISSUE	7
DATE	16 May 2019
APPROVED	A.N.M

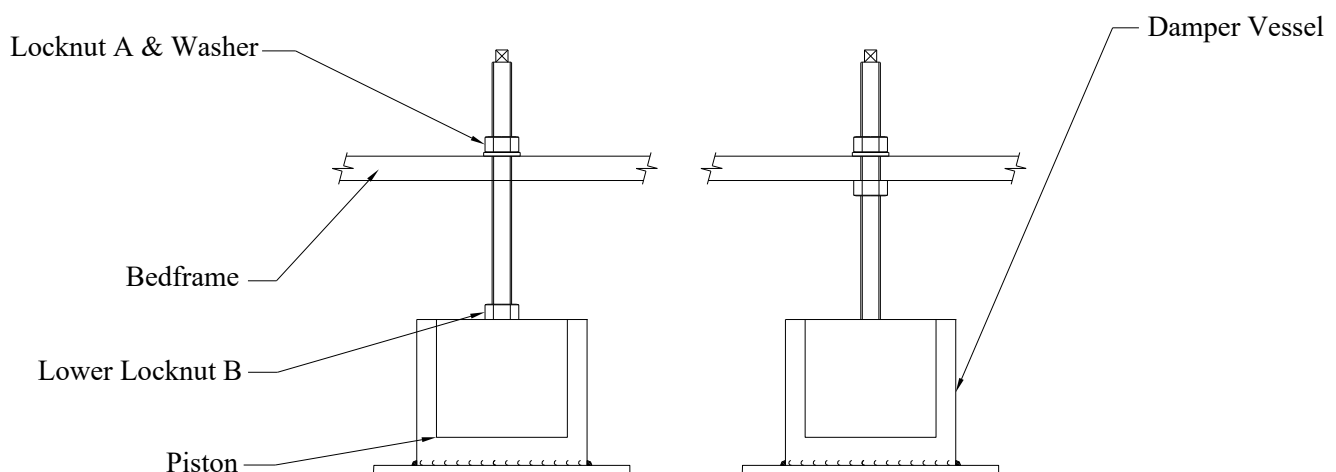
TITLE. Installation instructions for Viscous Damper Units type MD1, 2 or 3.

Viscous dampers are normally used in conjunction with open spring type isolators, and should be installed in accordance with the following procedure based on a typical Generating Set installation. (Figure 5)

1. Remove top locknuts from spring isolators and damper fixing studs.
2. Jack up machine and "block-up" baseframe. Position spring isolators and damper units with studs located through machine baseframe.
3. Level isolator and dampers if required by either shimming using thin metal plates beneath baseplates or by using a resin grout (typically chockfast orange).
4. Secure both isolator and damper bases to floor, soleplates or subframe using suitable HD bolts (supplied by others).
5. Remove blocks and lower machine until the springs are fully deflected under the static weight.
6. Level machine using isolator adjusting studs if required, then tighten isolator locknuts to fully secure isolators.

Figure 1.

Figure 2.



TECHNICAL DATA SHEET

DS 033

NON CONTROLLED UNLESS STATED OTHERWISE

PAGE	2 of 3
ISSUE	7
DATE	16 May 2019
APPROVED	A.N.M

TITLE. Installation instructions for Viscous Damper Units type MD1, 2 or 3.

Figure 3.

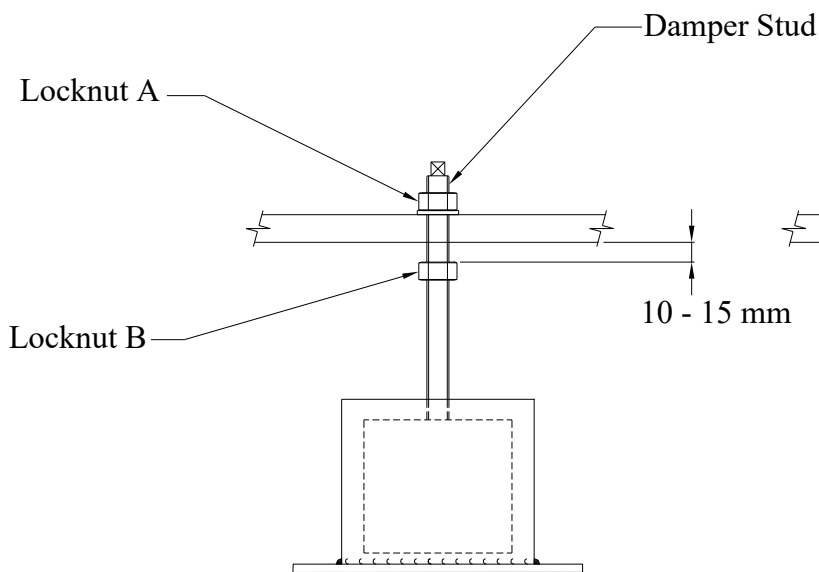
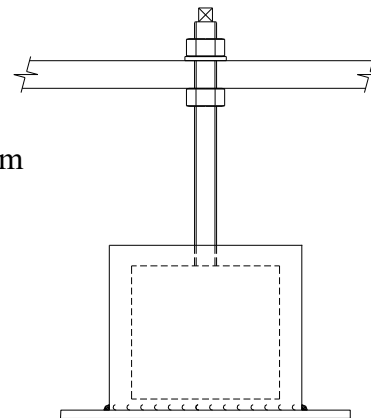


Figure 4.



7. Replace locknut A and washer onto damper studs and screw down until contact with baseframe is made (Figure 1).
8. Unscrew lower locknut B on damper top plate whilst holding stud in position, and screw nut up stud until contact with underside of baseframe is made. (Figure 2).
9. Damper piston is now ready to be lowered into its working position within the vessel. This entails breaking the seal between piston and rubber grommet which may be a little tight.
10. Screw down stud whilst holding locknut A until gap between lower locknut B and underside of baseframe is between 10 and 15mm - this will have broken the seal between piston and rubber grommet and positioned piston centrally within damper vessel. (Figure 3).
11. Screw locknut B back up stud to underside of baseframe and fully tighten both locknuts either side of baseframe until stud is secured. (Figure 4).

The isolator system is now ready for operation.

TECHNICAL DATA SHEET

DS 033

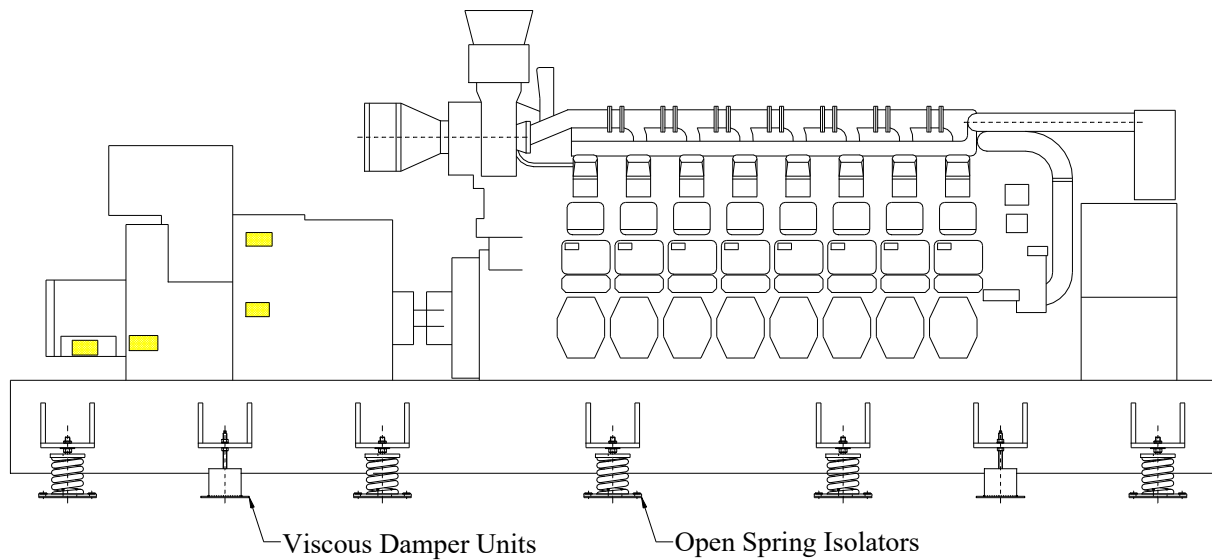
NON CONTROLLED UNLESS STATED OTHERWISE

PAGE	3 of 3
ISSUE	7
DATE	16 May 2019
APPROVED	A.N.M

TITLE.

Installation instructions for Viscous Damper Units type MD1, 2 or 3.

Figure 5. Typical Generating Set Installation



Please contact our Applications Department at the address below if you have any problems relating to installation or selection.



Christie & Grey
SINCE 1914

Morley Road, Tonbridge, Kent TN9 1RA, England
 Telephone : +44 (0) 1732 371100
 E-mail : sales@christiegrey.com
 web site: www.christiegrey.com

