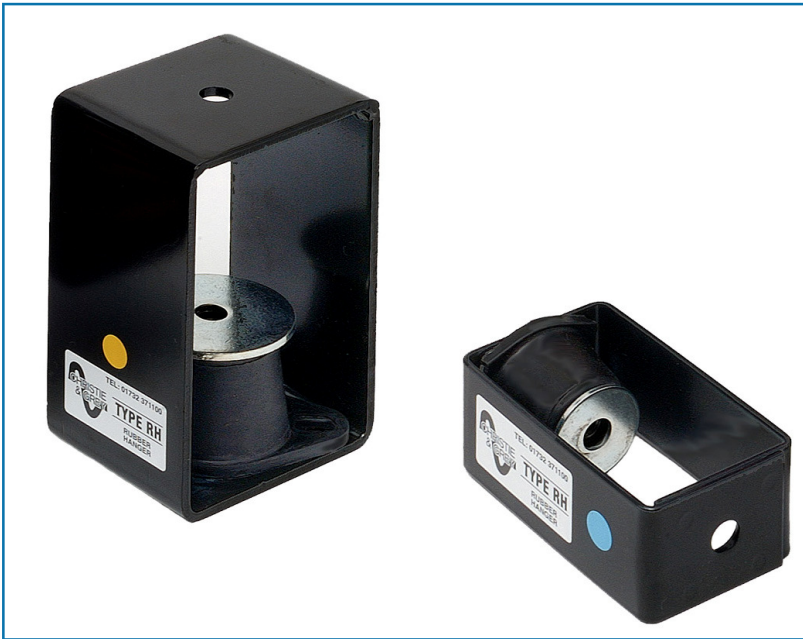


# Rubber Hangers

Types RH



A comprehensive range of rubber hangers offering the designer optimum performance at higher audible frequencies if noise control is of paramount importance.

Wide load ranges and fixing requirements are catered for. Specialist hangers combining steel springs and rubber elements are available and also higher deflection springs if required.

## DESIGN FEATURES

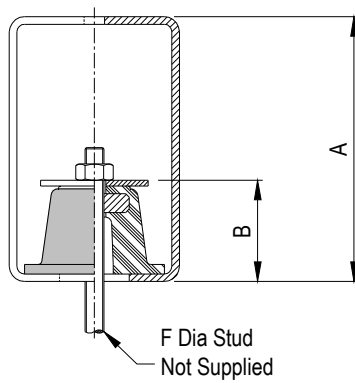
- Epoxy powder coated steel frame tested to 5 x rated load. Other steel parts are zinc plated.
- Rubber hangers supplied with failsafe steel overload washers.
- Rubber hangers have natural rubber elements with deflections up to 8 mm.
- Capable of up to 15° angular misalignment.
- Can be fitted in drop rod or direct to supporting structure.

## TYPICAL APPLICATIONS

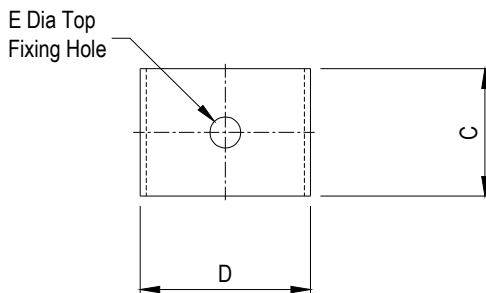
- Pipework.
- Axial Fans and Fan Coil Units.
- Ductwork and Attenuators.
- Exhaust Systems.
- Acoustic Ceilings.
- Any other suspended plant.

## TYPE RH RUBBER HANGERS

### TYPE RH



PART No.	COLOUR CODE	RATED LOAD (kg)	DEFLECTION AT RATED LOAD (mm)	DIMENSIONS (mm)						WT (kg) MAX
				A	B	C	D	E	F	
RH28	YELLOW	28	6	100	36	40	55	10	M8	0.31
RH50	BLUE	50	6							
RH80	RED	80	6							
RH110	YELLOW	110	8	140	52	70	90	11	M10	1.24
RH180	BLUE	180	8							
RH280	RED	280	8							



PIPE BORE (mm)	WEIGHT per METRE (kg)	LOAD per HANGER AT TYPICAL SPACINGS (kg)						
		2 m	2.5 m	3 m	3.5 m	4 m	4.5 m	5 m
50	10	20	25	30	-	-	-	-
65	14	28	35	42	49	-	-	-
80	18	36	45	54	63	-	-	-
100	26	52	65	78	91	-	-	-
125	34	68	85	102	119	136	-	-
150	44	88	110	132	154	176	-	-
200	86	172	215	258	-	-	-	-

Pipe weights are based on BS EN 10255, BS EN 10216-1 and BS EN 10217-1 for pipes with maximum volume of water and standard thermal insulation.

#### Installation Notes:

- Pipes should be supported on either side of changes of direction and additional hangers used to support heavy fittings and vertical droppers.
- For larger pipe sizes two hangers can be used at each support position.

For full installation instructions please refer to our data sheet DS029.

For more detailed information and technical assistance please contact our Technical Department.

In the interests of continual development, the Company reserves the right to make modifications to these details without notice.



### Christie & Grey Limited

Morley Road, Tonbridge, Kent TN9 1RA, England

Telephone : +44 (0) 1732 371100 • Fax: +44 (0) 1732 359666

E-mail : sales@christiegrey.com • web site: www.christiegrey.com

