

# TECHNICAL DATA SHEET DS 107

NON CONTROLLED UNLESS STATED OTHERWISE

QCF 56 Issue 3

PAGE

1 of 1

ISSUE

1

DATE

24 April 2014

APPROVED

PJB

TITLE. Installation instructions for TSC T15 mountings between engine/generator and skid frame.

The TSC T15 mountings should be installed generally in accordance with the following procedure:

1. The skid frame and engine/generator mounting brackets should be constructed to form rigid and reasonably level seating areas to ensure acceptable loading of the mountings.
2. The mountings should be examined to ensure they are of the correct size and variant. If appropriate, the positions for different variant should be located in accordance with our recommendations or drawings.
3. Position the mountings on the skid frame in the correct locations for each variant and loosely engage the bottom hold down fixing bolts. Lower the engine/generator in to position and loosely engage the upper fixing bolts. During installation it is important that the mountings are not sheared by ensuring that the upper and lower fixings are aligned.
4. Using the measurement method in figure 1, confirm that all criteria specified are met.

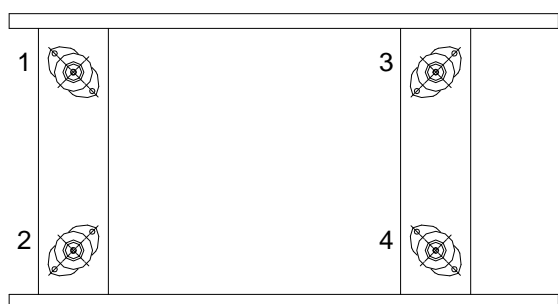


Figure 1

Measure the height of all four mountings and apply to the following criteria.

The difference in height between 1 and 2 should be equal to or less than 2 mm.

The difference in height between 3 and 4 should be equal to or less than 2 mm.

The difference in height between 1 + 4 and 2 + 3 should be less than or equal to 4 mm.

5. If the measurements are outside the criteria, use suitably sized shims between the mounting and engine/generator brackets based upon the following example shown in Figure 2.

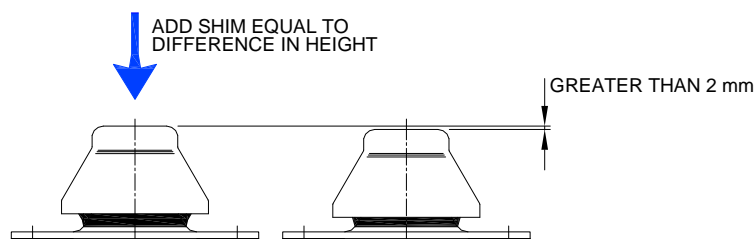


Figure 2

6. Once the criteria outlined in figure 1 is met, fully engage the mounting fixing bolts. Note: Mounting fixing bolts must not strain the mounting in any direction. The mountings are not designed to accommodate angular misalignment, variations in level, excessive horizontal forces or tensile forces. (Fixing bolts supplied by others).

It is recommended that mounting top fixing bolts material grade 8.8 (supplied by others) be tightened to their correct torque values.