

TECHNICAL DATA SHEET

DS 073

NON CONTROLLED UNLESS STATED OTHERWISE

QCF 56 Issue 3

PAGE

1 of 4

ISSUE

3

DATE

6 February 2006

APPROVED

P.J.B

TITLE.

Installation instructions for Marine Hangers.

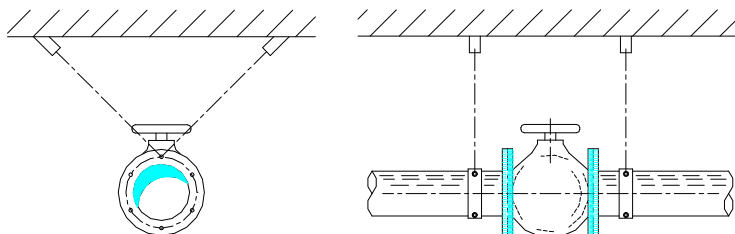
Each size of hanger is identified by the coded identification spot and physical dimensions.

- 1) Hanger sizes must be selected in accordance with the rated load capacities detailed on our appropriate drawings.
- 2) Pipes should be supported on either side of changes of direction, with additional hangers used to support heavy fittings and vertical drops. Hangers should be placed at 45 degree angles to the pipework run, as shown in figure 1, to ensure that ship seaway motion does not result in excessive movement of the pipework. These hangers can either be paired up on opposite sides to each other at suitable points along the pipework or placed on alternate sides along the length of the pipework at suitable centres.

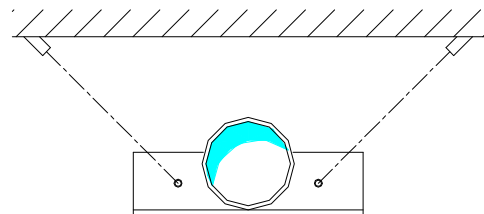
For larger pipe sizes, two hangers can be used at each support position, using a suitable pair of hangers for the load.

FIGURE 1

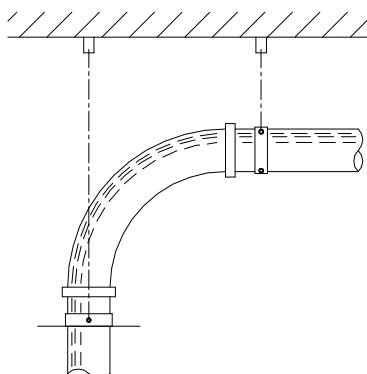
SUPPORTING HEAVY VALVES etc.



HEAVY PIPEWORK



VERTICAL DROPPERS



TECHNICAL DATA SHEET

DS 073

NON CONTROLLED UNLESS STATED OTHERWISE

QCF 56 Issue 3

PAGE

2 of 4

ISSUE

3

DATE

6 February 2006

APPROVED

P.J.B

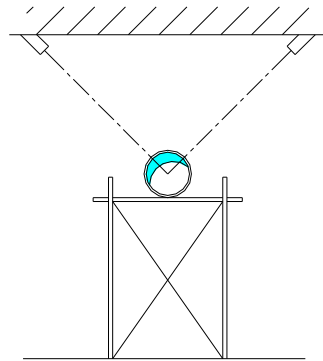
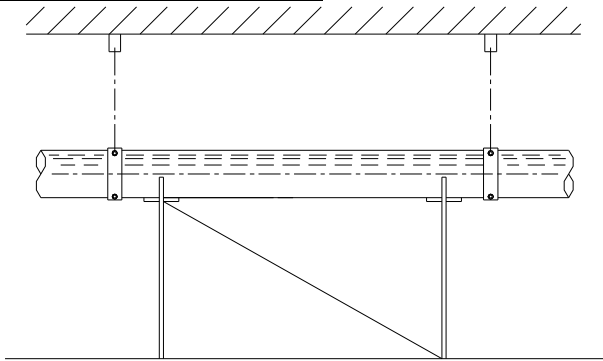
TITLE.

Installation instructions for Marine Hangers.

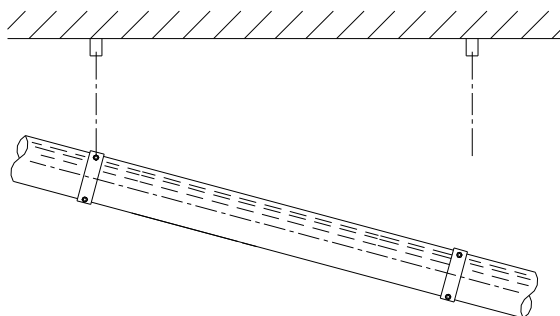
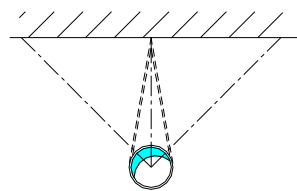
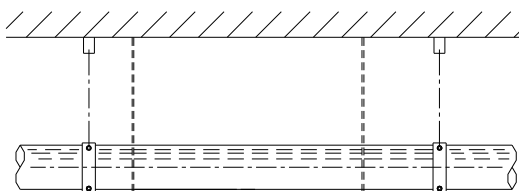
- 3) Pipework or equipment must be supported using a solid scaffolding arrangement or hung using wires, ropes or chains in its final position. See Figure 2.
- 4) Rubber hanger brackets should then be securely fixed to upper ceiling or steel gantry at correct spacing to suit hanger load capability.

FIGURE 2

SOLID SCAFFOLDING



SUPPORTING ROPES, CHAINS OR WIRES



TECHNICAL DATA SHEET

DS 073

NON CONTROLLED UNLESS STATED OTHERWISE

QCF 56 Issue 3

PAGE

3 of 4

ISSUE

3

DATE

6 February 2006

APPROVED

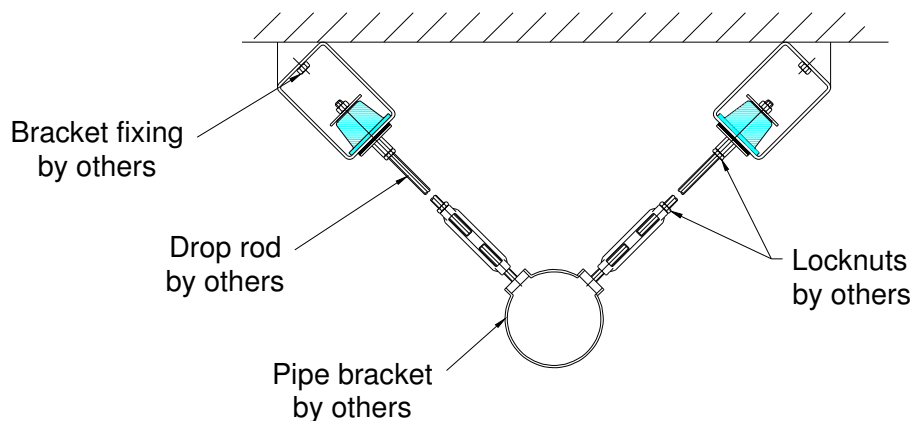
P.J.B

TITLE.

Installation instructions for Marine Hangers.

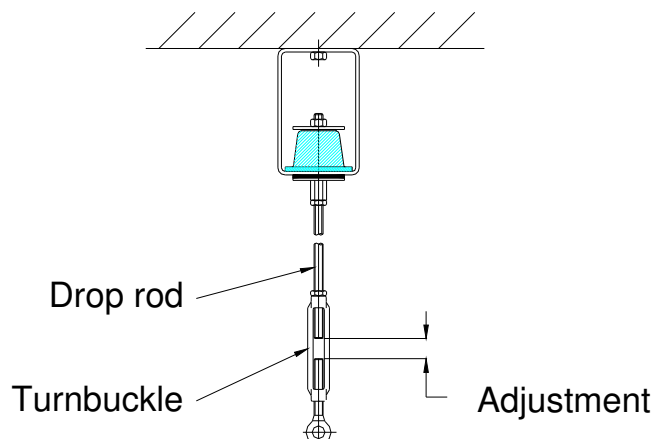
- 5) Drop rods should then be cut to size and screwed home into connector coupling on through underside of mount on rubber hangers. Two suitable locknuts should be placed on the droprod for use when adjusting droprod length. One of the locknut should then be used to secure the droprod into the connector by tightening the locknut against the connector. A turnbuckle should be positioned in the drop rod length to ensure adjustment of the pipe height.
See Figure 3.
- 6) Once the pipe/equipment end of the drop rod has been secured, the solid scaffolding or supporting wires can be removed, allowing the weight of pipework/equipment to be taken by the hangers.

FIGURE 3



Adjustment on rubber hangers should be done by adjusting the stud length through the turnbuckle to change the length of the drop rod. Once this adjustment has been achieved the second locknut should be secured against the turnbuckle.

FIGURE 4



TECHNICAL DATA SHEET DS 073

NON CONTROLLED UNLESS STATED OTHERWISE

QCF 56 Issue 3

PAGE

4 of 4

ISSUE

3

DATE

6 February 2006

APPROVED

P.J.B

TITLE.

Installation instructions for Marine Hangers.

- 7) Ensure hangers are not over loaded when installed. Check that the elements are not deflected more than limits allowed in our leaflets. See figure 4. Ensure that any misalignment does not exceed 10 degrees from the hanger centreline.



Christie & Grey Limited

Morley Road, Tonbridge, Kent TN9 1RA, England

Telephone : +44 (0) 1732 371100 • Fax: +44 (0) 1732 359666

E-mail : sales@christiegrey.com • web site: www.christiegrey.com

