

# TECHNICAL DATA SHEET DS 069

**NON CONTROLLED UNLESS STATED OTHERWISE**

QCF 56 Issue 3

PAGE

1 of 4

ISSUE

4

DATE

27 September 2006

APPROVED

M.T.P

TITLE.

Installation of Structural Steel Acoustic Bearing Pads.

Details of Isolators as leaflet PL041.

## General Notes

Check bearing pad part No. (See Figure 1) against location detailed on Christie & Grey installation drawing, if applicable.

Ensure pad seating surfaces are clean and free from debris, oil or water. Concrete surfaces must be a smooth power floated finish.

## Procedure

Position the correct size pad / part No. as indicated on Christie & Grey installation drawing, if applicable, onto the lower steel baseplate or concrete surface ensuring location over fixing studs or with steelwork fixing holes (See Figure 2 & 3). Alternatively the bearing pad can be adhered to the upper or lower using an industrial strength (typically toluene based) contact adhesive (available from Christie & Grey). Pins or fixing bolts should be used to ensure correct positioning over the fixing holes during adhesive contact (See Figure 3).

Correctly locate isolation sleeves, rubber and steel washers as detailed on Christie & Grey installation drawing or as shown in Figures 4, 5, 6 & 7 depending upon the upper and lower steelwork arrangement. We recommend that a locking nut ie. Nyloc or a full nut and lock nut together are used to secure the fixing bolts, which should be tightened diametrically until full pressure is exerted onto the bearing pad once the full load of the steelwork has been applied. Bolts or nuts must not be tightened to their full torque as this will apply a false load / deflection to the bearing pad.

Ensure the pads are kept free from oil and water and no debris can become lodged between the upper and lower base plates which can cause a vibration short circuit. The acoustic bearing pad arrangement as detailed in Figure 6 must use a foam or mastic in-fill to prevent ingress of debris.

## Additional Information

COSHH data for Natural Rubber used in the Acoustic Bearing pads is detailed on data sheet DS COSHH 0005. Contact Adhesive supplied by Christie & Grey is detailed on COSHH data sheet DS COSHH 0003. Nitrile and EPDM rubber used in the rubber sleeves and washers is detailed on COSHH data sheet DS COSHH 0013.

Please contact our Applications Department at the address on the last page, if you have any problems relating to installation or selection.

# TECHNICAL DATA SHEET

## DS 069

NON CONTROLLED UNLESS STATED OTHERWISE

QCF 56 Issue 3

PAGE

2 of 4

ISSUE

4

DATE

27 September 2006

APPROVED

M.T.P

TITLE.

Installation of Structural Steel Acoustic Bearing Pads.

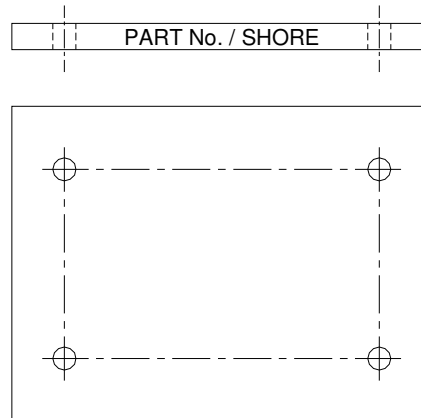


Figure 1

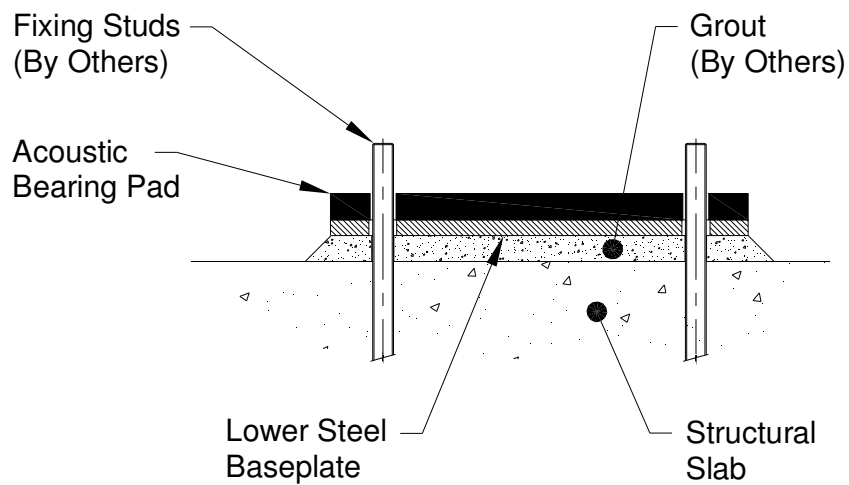


Figure 2

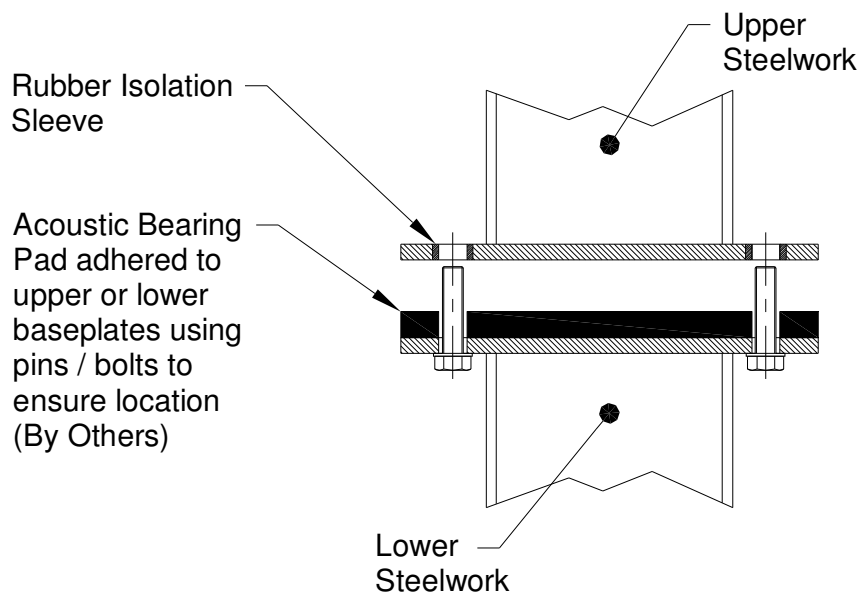


Figure 3

# TECHNICAL DATA SHEET

## DS 069

NON CONTROLLED UNLESS STATED OTHERWISE

QCF 56 Issue 3

PAGE

3 of 4

ISSUE

4

DATE

27 September 2006

APPROVED

M.T.P

TITLE.

Installation of Structural Steel Acoustic Bearing Pads.

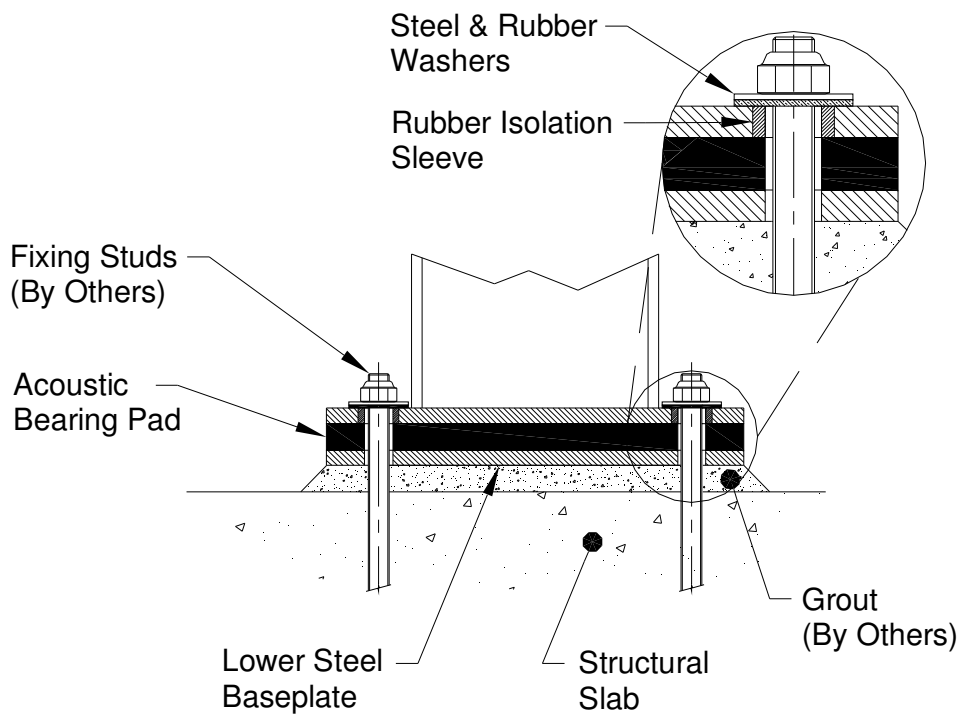


Figure 4

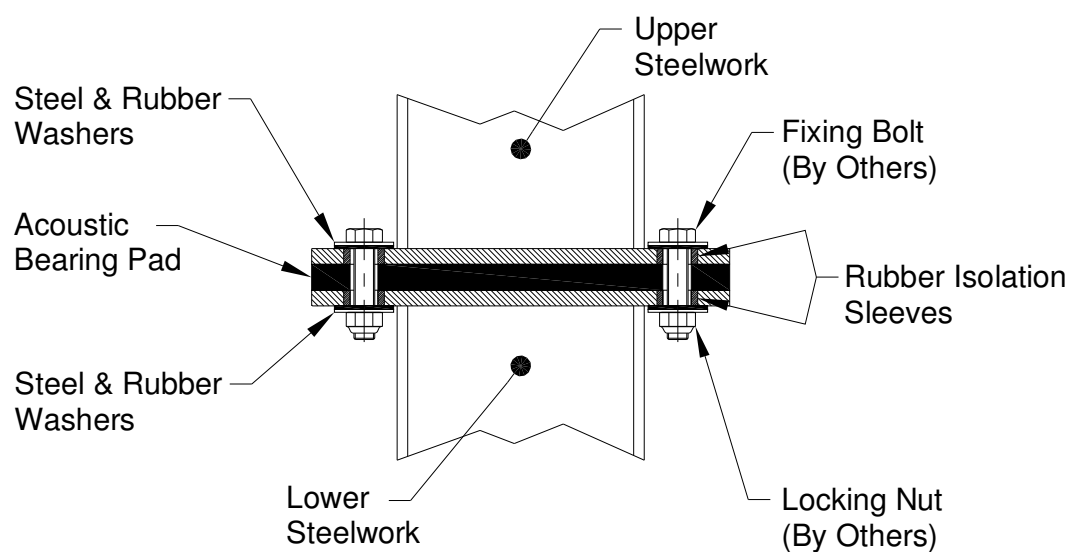


Figure 5

# TECHNICAL DATA SHEET

## DS 069

NON CONTROLLED UNLESS STATED OTHERWISE

QCF 56 Issue 3

PAGE

4 of 4

ISSUE

4

DATE

27 September 2006

APPROVED

M.T.P

TITLE.

Installation of Structural Steel Acoustic Bearing Pads.

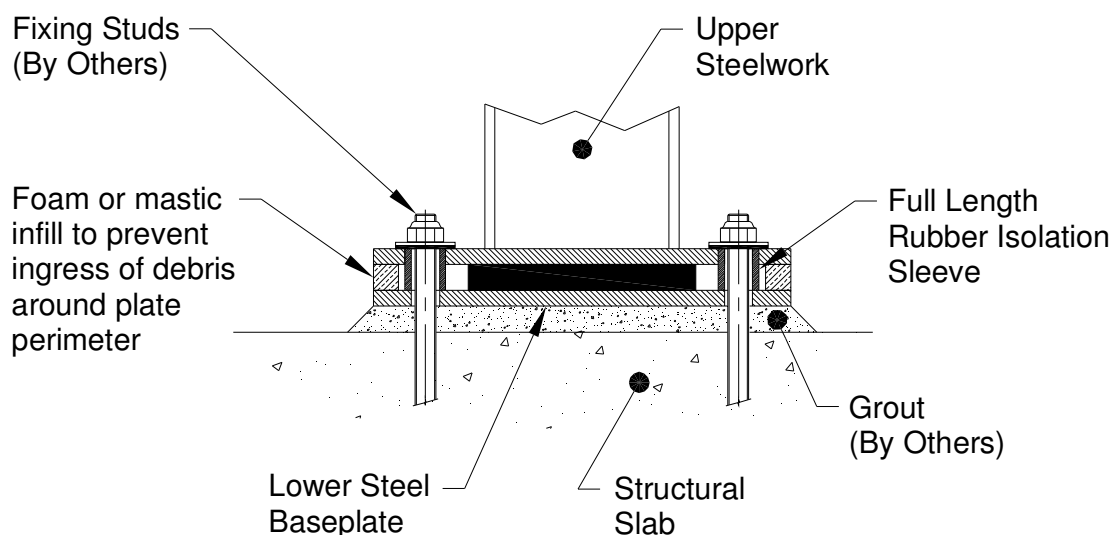


Figure 6

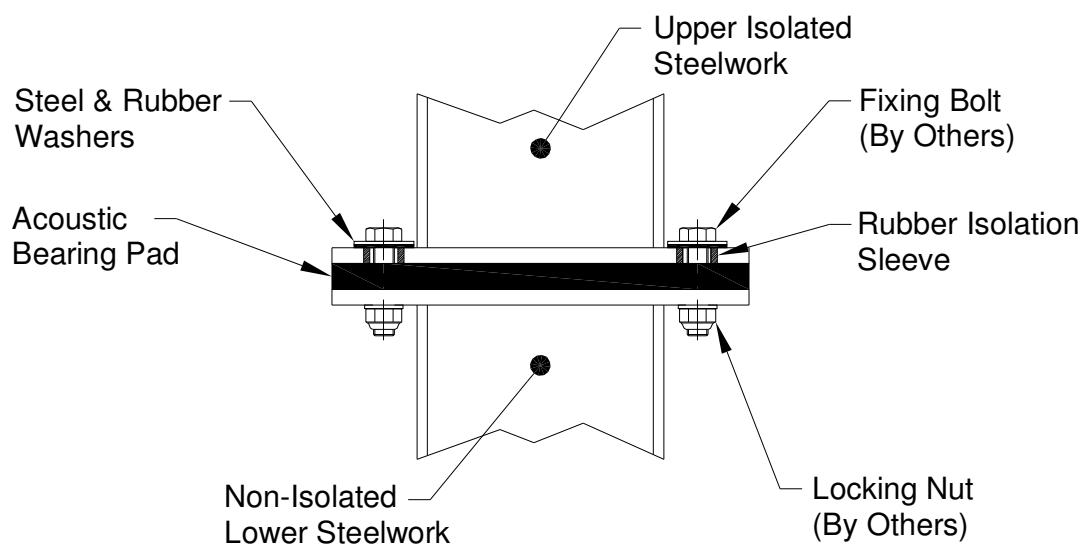


Figure 7



**Christie & Grey Limited**

Morley Road, Tonbridge, Kent TN9 1RA, England

Telephone : +44 (0) 1732 371100 • Fax: +44 (0) 1732 359666

E-mail : sales@christiegrey.com • web site: www.christiegrey.com

