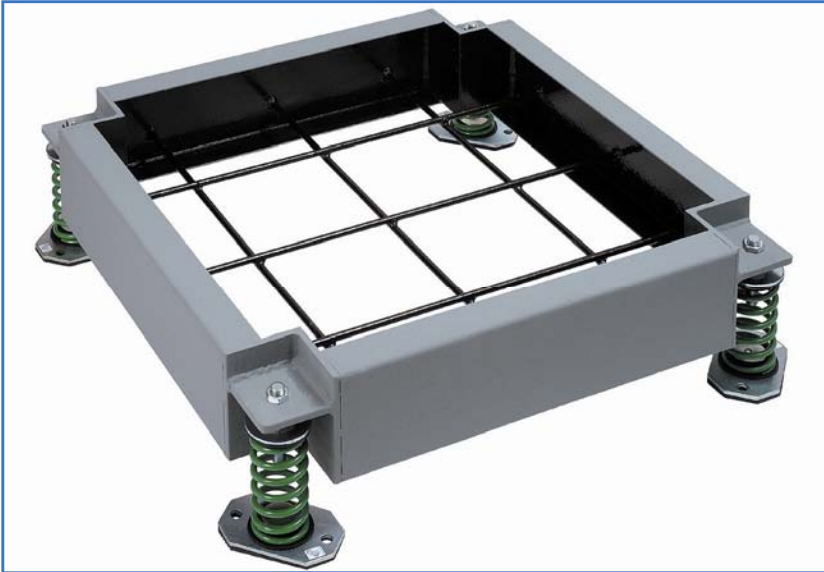


Inertia Pouring Frames

Type IPF



Standard Design IPF Shown with 50mm deflection springs

Inertia Pouring Frames have been developed for use with machines which produce high levels of vibration or those which are subjected to external forces or are simply unstable when mounted directly on spring or rubber mountings.

The use of Type IPF concrete filled steel frames allows high deflection/low stiffness mounting systems to be used giving extremely high vibration isolation without excessive motion. If required Silicon Filled Dampers (Type SFD) can be incorporated in the system to further control motion during transient conditions such as machine start up, run down and machine faults.

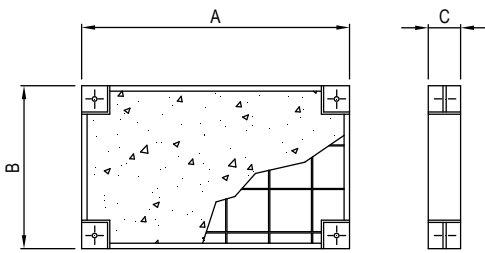
DESIGN FEATURES

- Fully welded steel construction with integral concrete reinforcement fixed at 40 mm above bottom of frame.
- Standard recessed height reducing corner brackets to suit Type OS Open Spring and ECS Enclosed Spring mountings or cantilever design for larger mountings.
- Frames can be manufactured for 25 mm and 50 mm deflection mountings and 3 to 4 mm deflection Studflex rubber pads.
- Large range of standard sizes in three depths 150, 200 and 300 mm and frame lengths not greater than 12 x depth unless additional mountings are fitted.
- Any size designed to order with larger units supplied in bolt together "on site" sectional form.
- Finished with a single coat of anti corrosive primer on external surfaces only or special finishes to order.

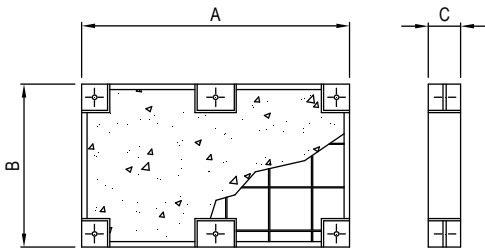
TYPICAL APPLICATIONS

- Compressors.
- Generating Sets.
- Engine/Dynamometer Test Rigs.
- Refrigeration Plant.
- Pumps (particularly Belt Driven types).

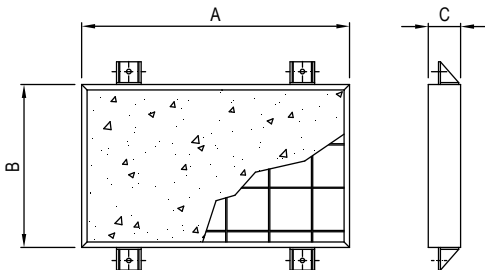
STANDARD DESIGN



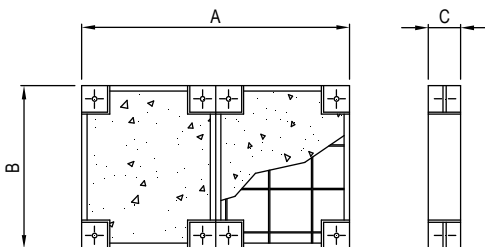
INTERMEDIATE BRACKETS FOR LONGER BASES



CANTILEVER BRACKET DESIGN FOR LARGER MOUNTINGS



SECTIONAL DESIGN FOR LONGER BASES



NOTE!

For frame sizes coloured grey additional mountings should be used or a deeper frame selected.

TYPE IPF INERTIA POURING FRAMES - WEIGHTS, SIZES & MOUNTING SELECTIONS

FRAME SIZE A x B (mm)	C = 150 mm		C = 200 mm		C = 300 mm	
	FILLED WEIGHT (kg)	MOUNTING PART No.	FILLED WEIGHT (kg)	MOUNTING PART No.	FILLED WEIGHT (kg)	MOUNTING PART No.
600 x 600	122	OS25/60 GREEN	160	OS25/100 BLUE	237	OS25/100 BLUE
750 x 600	154	OS25/100 BLUE	203	OS25/100 BLUE	300	OS25/160 WHITE
900 x 600	186	OS25/100 BLUE	245	OS25/160 WHITE	363	OS25/200 RED
1200 x 600	250	OS25/160 WHITE	330	OS25/160 WHITE	489	OS25/200 RED
1500 x 600	314	OS25/160 WHITE	414	OS25/200 RED	615	OS25/300 PURPLE
750 x 750	194	OS25/100 BLUE	255	OS25/160 WHITE	379	OS25/200 RED
900 x 750	233	OS25/100 BLUE	308	OS25/160 WHITE	457	OS25/200 RED
1200 x 750	313	OS25/160 WHITE	413	OS25/250 RED	613	OS25/300 PURPLE
1500 x 750	392	OS25/160 WHITE	518	OS25/250 RED	770	OS25/400 GREY
1800 x 750	471	OS25/250 RED	623	OS25/300 PURPLE	926	OS25/500 ORANGE
900 x 900	281	OS25/160 WHITE	371	OS25/160 WHITE	550	OS25/300 PURPLE
1200 x 900	375	OS25/160 WHITE	496	OS25/250 RED	737	OS25/300 PURPLE
1500 x 900	470	OS25/250 RED	621	OS25/300 PURPLE	924	OS25/400 GREY
1800 x 900	564	OS25/250 RED	747	OS25/300 PURPLE	1111	OS25/500 ORANGE
2100 x 900	See Note		872	OS25/400 GREY	1298	OS25/500 ORANGE
1050 x 1050	383	OS25/250 RED	506	OS25/250 RED	753	OS25/400 GREY
1500 x 1050	548	OS25/250 RED	725	OS25/300 PURPLE	1079	OS25/500 ORANGE
1800 x 1050	658	OS25/300 PURPLE	871	OS25/400 GREY	1297	OS25/500 ORANGE
2100 x 1050	See Note		1016	OS25/500 ORANGE	1514	OS25/600 BROWN
2400 x 1050	See Note		1162	OS25/500 ORANGE	1732	OS25/800 BLACK
1200 x 1200	500	OS25/250 RED	662	OS25/300 PURPLE	985	OS25/400 GREY
1500 x 1200	626	OS25/300 PURPLE	828	OS25/400 GREY	1233	OS25/500 ORANGE
1800 x 1200	751	OS25/400 GREY	995	OS25/400 GREY	1482	OS25/600 BROWN
2100 x 1200	See Note		1161	OS25/500 ORANGE	1730	OS25/800 BLACK
2400 x 1200	See Note		1327	OS25/600 BROWN	1978	OS25/1000 BLUE
1400 x 1400	681	OS25/300 PURPLE	902	OS25/400 GREY	1343	OS25/600 BROWN
1800 x 1400	876	OS25/400 GREY	1160	OS25/600 BROWN	1728	OS25/800 BLACK
2100 x 1400	See Note		1353	OS25/600 BROWN	2017	OS25/1000 BLUE
2400 x 1400	See Note		1547	OS25/800 BLACK	2306	OS25/1000 BLUE

Frame weights include concrete at 2245 kg/m³ and mounting selections are based on 4 mountings per frame allowing 50% additional weight for the equipment to be supported. Nominal 25 mm deflection Type OS Open Spring Isolators have been listed, however the exact deflection will vary depending on the applied load.

When ordering, frames should be specified as Length x Width x Thickness, e.g. IPF.1200.0900.150 - IPF 1200 mm long x 900 mm wide x 150 mm deep. Mountings should also be listed e.g. "4 off OS25/160 - WHITE.

For full installation instructions please refer to our data sheet DS028.

For more detailed information and technical assistance please contact our Technical Department.

In the interests of continual development, the Company reserves the right to make modifications to these details without notice.



Christie & Grey Limited

Morley Road, Tonbridge, Kent TN9 1RA, England

Telephone : +44 (0) 1732 371100 • Fax: +44 (0) 1732 359666

E-mail : sales@christiegrey.com • web site: www.christiegrey.com

