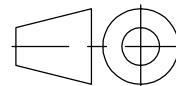


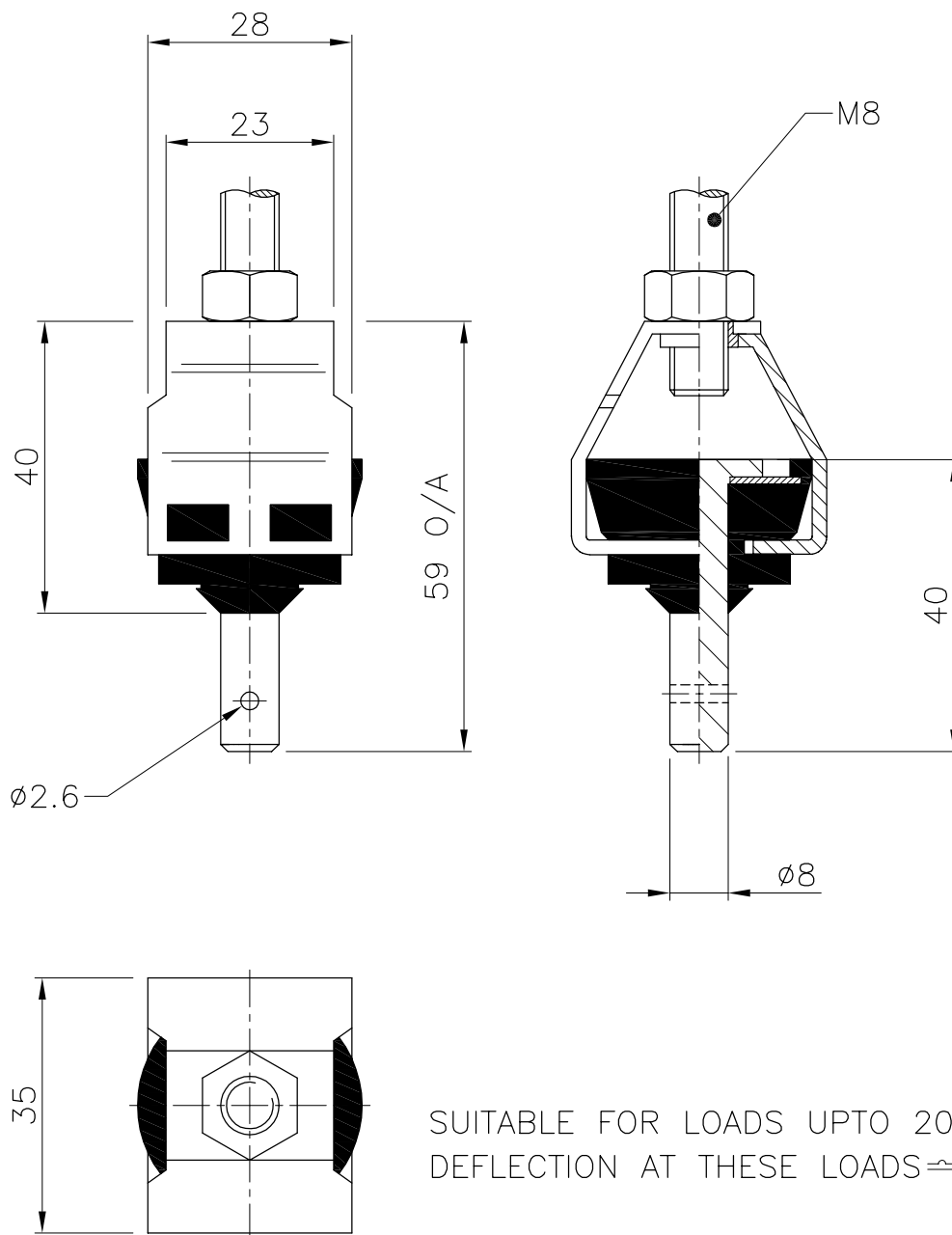
DIMENSIONS IN MILLIMETRES (mm) UNLESS OTHERWISE STATED
 TOLERANCES EXCEPT WHERE OTHERWISE STATED $\pm 0.25\text{mm}$
 NON-CONTROLLED UNLESS STAMPED OTHERWISE.

First angle
 projection




QFCF601SSUE3

GENERAL ARRANGEMENT OF ACH/S20
ACOUSTIC CEILING HANGER (STUD)



SUITABLE FOR LOADS UPTO 20 kg
 DEFLECTION AT THESE LOADS $\approx 2\text{mm}$

FOR GENERAL DETAILS SEE CHRISTIE & GREY LEAFLET PL023.
 FOR INSTALLATION INSTRUCTIONS SEE CHRISTIE & GREY
 DATA SHEET DS 029 & DS COSHH 0001 RESPECTIVELY.

Drawing No. S140	A	B	C	Job No. -	Scale 1:1	 Engineers in vibration, noise and shock control. Christie & Grey Morley Road, Tonbridge, Kent, TN9 1RA England
	16/11/99	06/12/00	02/11/05			
Change note No.		326	138	Checked A.R.B.		