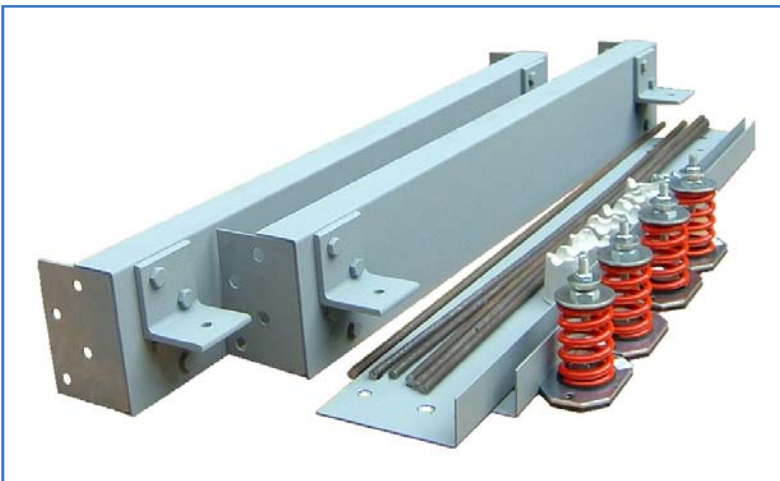
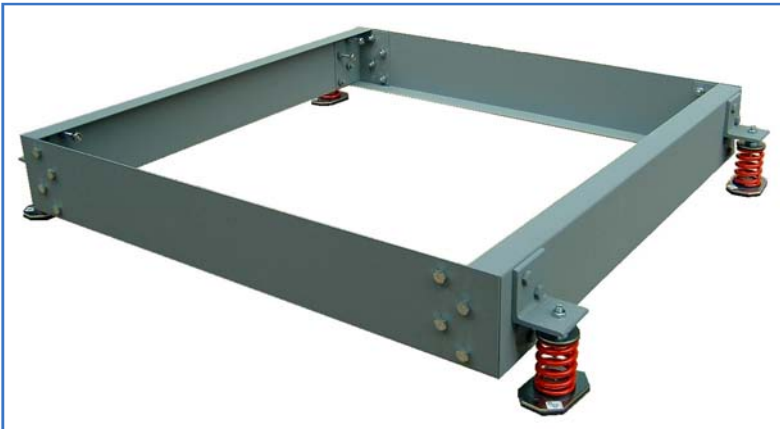
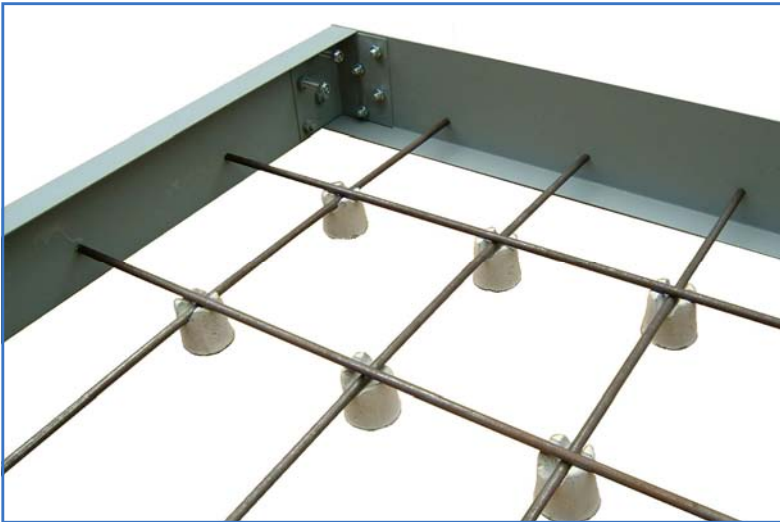


Inertia Pouring Frames

Type SA - Self Assembly



Inertia Pouring Frames have been developed for use with machines which produce high levels of vibration or those which are subjected to external forces or are simply unstable when mounted directly on spring or rubber mountings.

The use of Type IPF concrete filled steel frames allows high deflection/low stiffness mounting systems to be used giving extremely high vibration isolation without excessive motion.

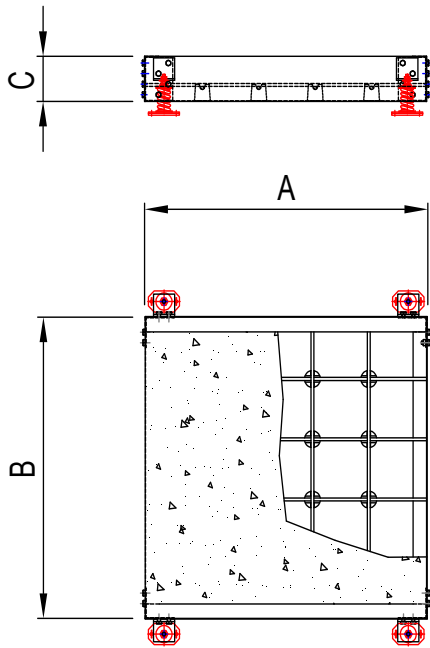
DESIGN FEATURES

- Type SA Inertia Frames have been specially designed for restricted access plant room and roof areas.
- Frames supplied part assembled for easy installation on site.
- Designed with manual handling in mind. Individual components not weighing more than 6.5 kg each.
- Side brackets to suit Type OS Open Spring mountings.
- Concrete reinforcement bars positioned at 40 mm above bottom of frame using mesh spacers provided.
- A range of standard sizes which can be bolted together to provide longer frames in sections.
- Others sizes designed to order.
- Finished with a single coat of anti corrosive primer on external surfaces only or special finishes to order.

TYPICAL APPLICATIONS

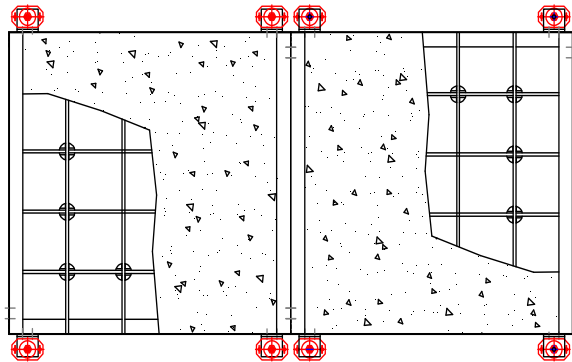
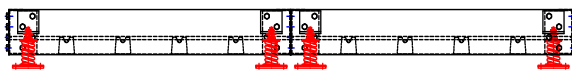
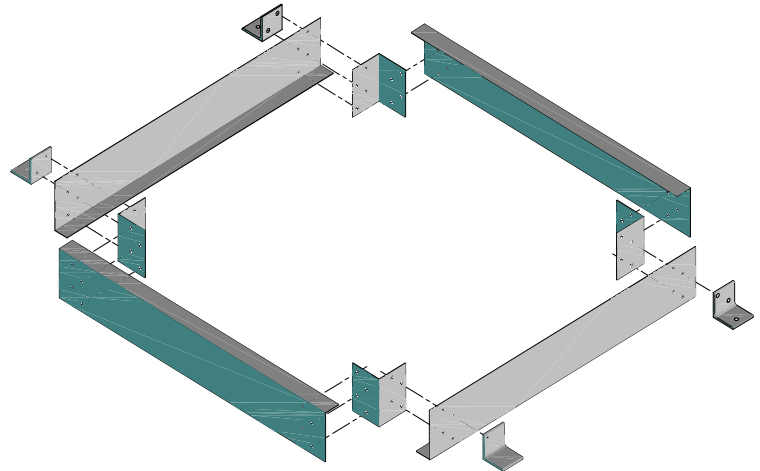
- Compressors.
- Generating Sets.
- Engine/Dynamometer Test Rigs.
- Refrigeration Plant.
- Pumps (particularly Belt Driven types).

SELF ASSEMBLY DESIGN



TYPE IPF INERTIA POURING FRAMES - WEIGHTS, SIZES & MOUNTING SELECTIONS

FRAME SIZE A x B (mm)	C = 150 mm	
	FILLED WEIGHT (kg)	MOUNTING PART No.
600 x 600	147	OS25/60 GREEN
900 x 600	211	OS25/100 BLUE
1200 x 600	277	OS25/160 WHITE
900 x 900	307	OS25/160 WHITE
1200 x 900	402	OS25/160 WHITE
1200 x 1200	529	OS25/250 RED



Notes

Polythene separation sheet not provided.

**FOR LONGER PLANT EQUIPMENT
FRAMES CAN BE BOLTED TOGETHER
END TO END**

Frame weights include concrete at 2245 kg/m³ and mounting selections are based on 4 mountings per frame allowing 80% additional weight for the equipment to be supported. Nominal 25 mm deflection Type OS Open Spring Isolators have been listed, however the exact deflection will vary depending on the applied load.

When ordering, frames should be specified as Length x Width x Thickness, e.g. SA.IPF.1200.0900.150 - IPF 1200 mm long x 900 mm wide x 150 mm deep. Mountings should also be listed e.g. "4 off OS25/160 - WHITE.

For full installation instructions please refer to our data sheet DS085.

For more detailed information and technical assistance please contact our Technical Department.

In the interests of continual development, the Company reserves the right to make modifications to these details without notice.



Christie & Grey Limited

Morley Road, Tonbridge, Kent TN9 1RA, England

Telephone : +44 (0) 1732 371100 • Fax: +44 (0) 1732 359666

E-mail : sales@christiegrey.com • web site: www.christiegrey.com

