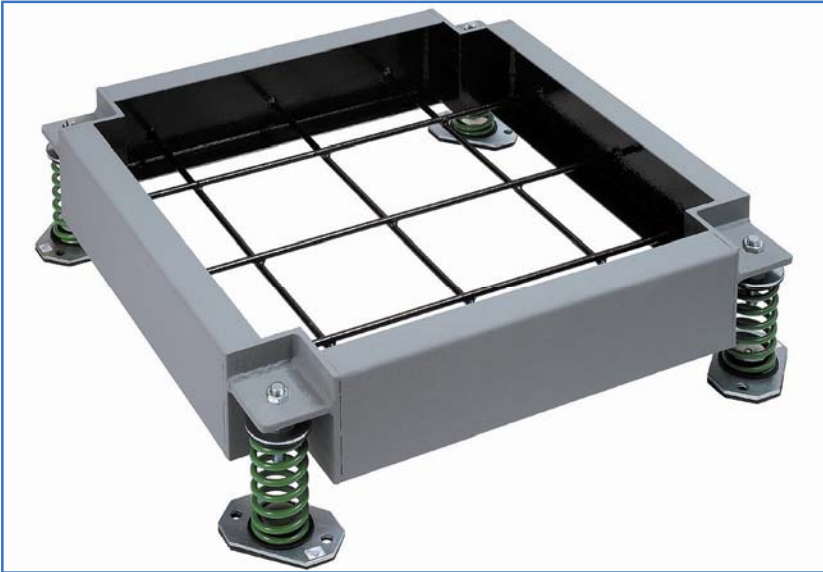


Inertia Pouring Frames

Type IPF



Standard Design IPF Shown with 50mm deflection springs

Inertia Pouring Frames have been developed for use with machines which produce high levels of vibration or those which are subjected to external forces or are simply unstable when mounted directly on spring or rubber mountings.

The use of Type IPF concrete filled steel frames allows high deflection/low stiffness mounting systems to be used giving extremely high vibration isolation without excessive motion. If required Silicon Filled Dampers (Type SFD) can be incorporated in the system to further control motion during transient conditions such as machine start up, run down and machine faults.

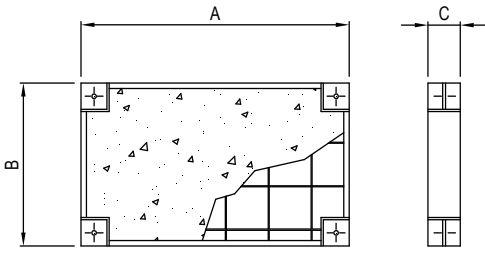
DESIGN FEATURES

- Fully welded steel construction with integral concrete reinforcement fixed at 40 mm above bottom of frame.
- Standard recessed height reducing corner brackets to suit Type OS Open Spring and ECS Enclosed Spring mountings or cantilever design for larger mountings.
- Frames can be manufactured for 25 mm and 50 mm deflection mountings and 3 to 4 mm deflection Studflex rubber pads.
- Large range of standard sizes in three depths 150, 200 and 300 mm and frame lengths not greater than 12 x depth unless additional mountings are fitted.
- Any size designed to order with larger units supplied in bolt together "on site" sectional form.
- Finished with a single coat of anti corrosive primer on external surfaces only or special finishes to order.

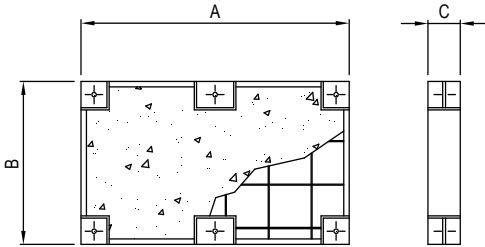
TYPICAL APPLICATIONS

- Compressors.
- Generating Sets.
- Engine/Dynamometer Test Rigs.
- Refrigeration Plant.
- Pumps (particularly Belt Driven types).

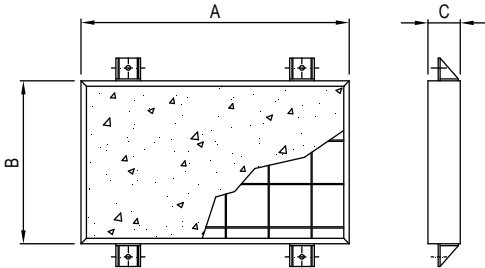
STANDARD DESIGN



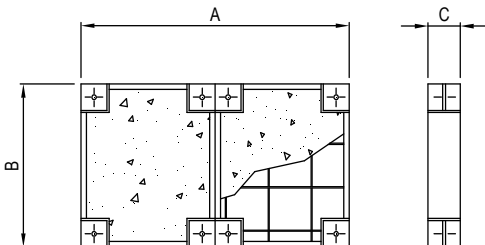
INTERMEDIATE BRACKETS FOR LONGER BASES



CANTILEVER BRACKET DESIGN FOR LARGER MOUNTINGS



SECTIONAL DESIGN FOR LONGER BASES



NOTE!

For frame sizes coloured grey additional mountings should be used or a deeper frame selected.

TYPE IPF INERTIA POURING FRAMES - WEIGHTS, SIZES & MOUNTING SELECTIONS

FRAME SIZE A x B (mm)	C = 150 mm		C = 200 mm		C = 300 mm	
	FILLED WEIGHT (kg)	MOUNTING PART No.	FILLED WEIGHT (kg)	MOUNTING PART No.	FILLED WEIGHT (kg)	MOUNTING PART No.
600 x 600	147	OS25/60 GREEN	176	OS25/100 BLUE	265	OS25/100 BLUE
750 x 600	180	OS25/100 BLUE	221	OS25/100 BLUE	330	OS25/160 WHITE
900 x 600	211	OS25/100 BLUE	265	OS25/160 WHITE	395	OS25/200 RED
1200 x 600	277	OS25/160 WHITE	353	OS25/160 WHITE	530	OS25/200 RED
1500 x 600	360	OS25/160 WHITE	441	OS25/200 RED	660	OS25/300 PURPLE
750 x 750	219	OS25/100 BLUE	288	OS25/160 WHITE	410	OS25/200 RED
900 x 750	259	OS25/100 BLUE	342	OS25/160 WHITE	495	OS25/200 RED
1200 x 750	339	OS25/160 WHITE	448	OS25/250 RED	660	OS25/300 PURPLE
1500 x 750	420	OS25/160 WHITE	554	OS25/250 RED	820	OS25/400 GREY
1800 x 750	500	OS25/250 RED	660	OS25/300 PURPLE	990	OS25/500 ORANGE
900 x 900	307	OS25/160 WHITE	404	OS25/160 WHITE	600	OS25/300 PURPLE
1200 x 900	402	OS25/160 WHITE	531	OS25/250 RED	788	OS25/300 PURPLE
1500 x 900	498	OS25/250 RED	658	OS25/300 PURPLE	977	OS25/400 GREY
1800 x 900	594	OS25/250 RED	785	OS25/300 PURPLE	1166	OS25/500 ORANGE
2100 x 900	See Note		911	OS25/400 GREY	1353	OS25/500 ORANGE
1050 x 1050	465	OS25/250 RED	542	OS25/250 RED	804	OS25/400 GREY
1500 x 1050	575	OS25/250 RED	761	OS25/300 PURPLE	1121	OS25/500 ORANGE
1800 x 1050	687	OS25/300 PURPLE	908	OS25/400 GREY	1350	OS25/500 ORANGE
2100 x 1050	See Note		1055	OS25/500 ORANGE	1570	OS25/600 BROWN
2400 x 1050	See Note		1201	OS25/500 ORANGE	1788	OS25/800 BLACK
1200 x 1200	529	OS25/250 RED	699	OS25/300 PURPLE	1038	OS25/400 GREY
1500 x 1200	662	OS25/300 PURPLE	685	OS25/400 GREY	1286	OS25/500 ORANGE
1800 x 1200	794	OS25/400 GREY	1032	OS25/400 GREY	1536	OS25/600 BROWN
2100 x 1200	See Note		1199	OS25/500 ORANGE	1785	OS25/800 BLACK
2400 x 1200	See Note		1369	OS25/600 BROWN	2038	OS25/1000 BLUE
1400 x 1400	720	OS25/300 PURPLE	960	OS25/400 GREY	1397	OS25/600 BROWN
1800 x 1400	926	OS25/400 GREY	1235	OS25/600 BROWN	1783	OS25/800 BLACK
2100 x 1400	See Note		1440	OS25/600 BROWN	2074	OS25/1000 BLUE
2400 x 1400	See Note		1650	OS25/800 BLACK	2365	OS25/1000 BLUE

Frame weights include concrete at 2245 kg/m³ and mounting selections are based on 4 mountings per frame allowing 80% additional weight for the equipment to be supported. Nominal 25 mm deflection Type OS Open Spring Isolators have been listed, however the exact deflection will vary depending on the applied load.

When ordering, frames should be specified as Length x Width x Thickness, e.g. IPF.1200.0900.150 - IPF 1200 mm long x 900 mm wide x 150 mm deep. Mountings should also be listed e.g. "4 off OS25/160 - WHITE.

For full installation instructions please refer to our data sheet DS028.

For more detailed information and technical assistance please contact our Technical Department.

In the interests of continual development, the Company reserves the right to make modifications to these details without notice.



Christie & Grey Limited

Morley Road, Tonbridge, Kent TN9 1RA, England

Telephone : +44 (0) 1732 371100 • Fax: +44 (0) 1732 359666

E-mail : sales@christiegrey.com • web site: www.christiegrey.com

