

Bobbins

Type Circular Rubber Mountings



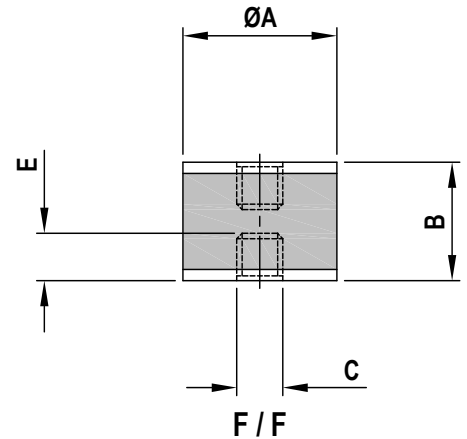
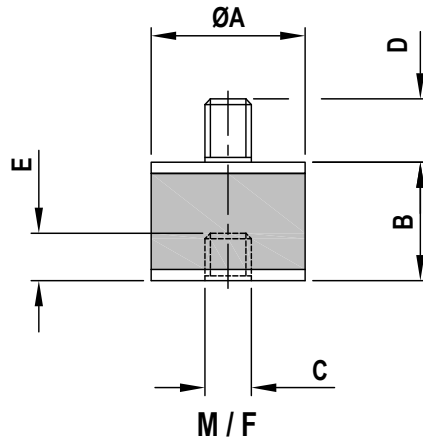
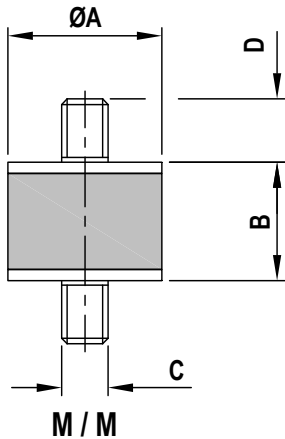
Type Male / Male



Type Male / Female



Type Female / Female



TYPE & PART No.			RUBBER SHORE HARDNESS	MAX LOAD / DEFLECTION				DIMENSIONS (mm)					WEIGHT (kg) MAX
M / M	M / F	F / F		COMPRESSION		SHEAR		A	B	C	D	E	
				kg	mm	kg	mm						
60.100	60.200	-	45	1.9	0.6	1.0	1.4	10	8	M4	10	4	0.003
			60	3.9	0.6	1.8	1.4						
60.101	60.201	-	45	2.0	0.8	0.9	1.9	10	10	M4	10	4	0.004
			60	3.1	0.7	1.7	1.9						
60.102 *	-	-	45	2.1	0.5	0.5	3.0	11	11	M4	10	4	0.004
			60	4.4	0.5	0.5	1.5						
60.103	-	-	45	6.2	0.6	2.3	1.4	15	8	M4	10	4	0.005
			60	10.4	0.6	4.4	1.4						
60.104	60.204	60.304	45	4.1	1.3	2.0	3.2	15	15	M4	13	4	0.007
			60	9.2	1.2	3.8	3.1						
60.105	60.205	60.305	45	4.1	1.9	1.6	4.4	15	20	M4	13	4	0.008
			60	9.2	1.8	3.0	4.4						
60.106	60.206	-	45	9.2	1.2	4.1	2.8	20	15	M6	15	6	0.02
			60	20.0	1.2	7.4	2.7						
60.107	60.207	60.307	45	8.2	1.8	3.8	4.0	20	20	M6	15	6	0.02
			60	17.3	1.7	6.9	4.0						
60.108	60.208	60.308	45	7.1	2.2	3.1	5.2	20	25	M6	15	6	0.022
			60	16.3	2.1	5.6	5.2						
60.109	-	-	45	30.0	0.7	6.7	1.5	25	10	M6	18	6	0.025
			60	53.0	0.6	12.2	1.5						
60.110	60.210	-	45	16.3	1.2	6.5	2.8	25	15	M6	18	6	0.03
			60	33.0	1.1	11.9	2.7						
60.111	60.211	60.311	45	14.3	1.9	6.2	4.0	25	20	M6	18	6	0.03
			60	30.0	1.7	11.4	4.0						
60.112	60.212	60.312	45	11.2	2.8	4.8	6.5	25	30	M6	18	6	0.035
			60	26.0	2.6	8.9	6.5						

All parts are manufactured from first grade natural rubber with steel metals, zinc plated on exposed surfaces, apart from parts marked * which have brass metals. Bobbin mountings should not be used in tension or exposed to contamination by mineral oils.

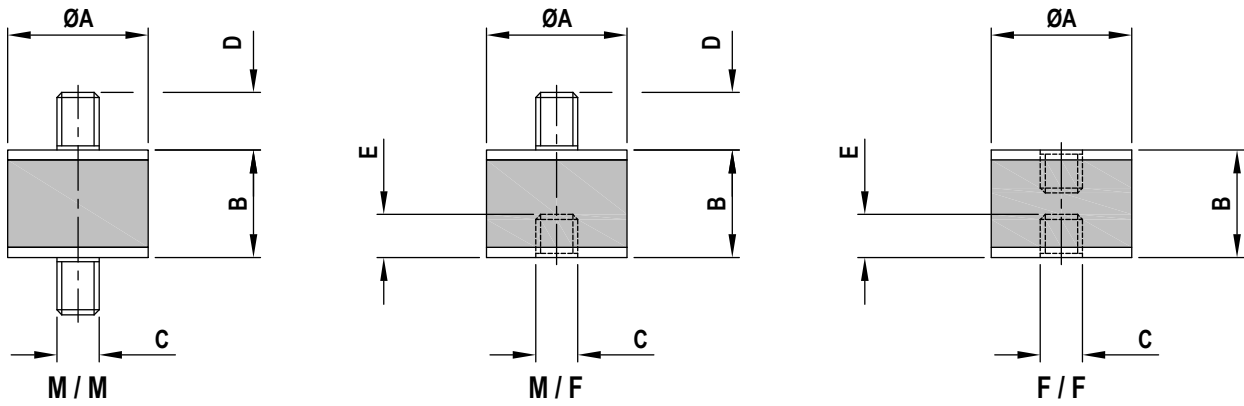
Suffix part no. with .45 or .60 to indicate rubber hardness.

Not all parts listed above are available Ex-Stock. Minimum order quantities may apply.



Vibration & Shock Control

BOBBINS TYPE CIRCULAR RUBBER MOUNTINGS



TYPE & PART No.			RUBBER SHORE HARDNESS	MAX LOAD / DEFLECTION				DIMENSIONS (mm)					WEIGHT (kg) MAX
M / M	M / F	F / F		COMPRESSION		SHEAR		A	B	C	D	E	
				kg	mm	kg	mm						
60.113	60.213	-	45	29	1.2	9.6	2.8	30	15	M8	20	8	0.044
			60	54	1.1	17.3	2.7						
60.114	60.214	60.314	45	20	1.7	9.2	4.0	30	20	M8	20	8	0.05
			60	45	1.7	17	4.0						
60.115	60.215	60.315	45	17	2.9	8.2	6.5	30	30	M8	20	8	0.055
			60	38	2.6	15.1	6.5						
60.116	60.216	60.316	45	35	2.9	16	6.5	40	30	M8	23	8	0.09
			60	71	2.6	29	6.5						
60.117	60.217	60.317	45	33	3.4	15	7.8	40	35	M8	23	8	0.095
			60	69	3.1	28	7.7						
60.118	60.218	60.318	45	31	4.0	14	9.0	40	40	M8	23	8	0.1
			60	66	3.6	26	8.9						
60.119	60.219	-	45	102	1.5	27	3.5	50	20	M10	28	10	0.13
			60	194	1.4	49	3.5						
60.120	60.220	60.320	45	61	2.6	25	6.0	50	30	M10	28	10	0.15
			60	133	2.5	48	6.0						
60.121	60.221	60.321	45	51	3.7	24	8.5	50	40	M10	28	10	0.17
			60	112	3.5	45	8.4						
60.122	60.222	60.322	45	49	4.2	23	9.8	50	45	M10	28	10	0.18
			60	102	3.8	44	9.7						
60.123	60.223	60.323	45	49	4.9	22	11.0	50	50	M10	28	10	0.19
			60	102	4.3	42	11.0						
60.124	60.224	60.324	45	112	4.3	50	9.7	70	45	M10	30	10	0.38
			60	234	4.0	92	9.7						
60.125	60.225	-	45	255	2.1	61	4.8	75	25	M12	37	12	0.36
			60	459	1.9	112	4.7						
60.126	60.226	60.326	45	143	3.7	58	8.4	75	40	M12	37	12	0.42
			60	296	3.4	108	8.4						
60.127	60.227	60.327	45	122	4.7	57	10.9	75	50	M12	37	12	0.52
			60	265	4.5	102	10.6						
60.128	60.228	60.328	45	122	5.5	56	12.2	75	55	M12	37	12	0.5
			60	255	5.0	102	12.1						
60.129	60.229	-	45	347	3.5	108	8.0	100	40	M16	45	16	0.9
			60	663	3.2	196	7.9						
60.130	60.230	60.330	45	255	5.2	102	11.7	100	55	M16	45	16	1.03
			60	510	4.7	192	11.7						

Suffix part no. with .45 or .60 to indicate rubber hardness.

Not all parts listed above are available Ex-Stock. Minimum order quantities may apply.

For full installation instructions please refer to our data sheet DS023.

For more detailed information and technical assistance please contact our Technical Department.

In the interests of continual development, the Company reserves the right to make modifications to these details without notice.



Christie & Grey Limited

Morley Road, Tonbridge, Kent TN9 1RA, England

Telephone : +44 (0) 1732 371100 • Fax: +44 (0) 1732 359666

E-mail : sales@christiegrey.com • web site: www.christiegrey.com

